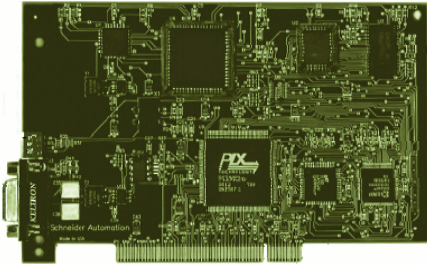


Accessories PLC-ANALYZER pro / BLACKBOX

PCI-85 Schneider Modbus+ adapter (416NHM30030A)

Art.-Nr. ANA1570E



PCI-85 Schneider Modbus+ adapter for connecting a PC to Modbus+.

The PCI-85 card connects your computer to a Modbus+ network, so that computer programs (e.g. PLC-ANALYZER pro) are able to exchange data with Schneider PLCs and other devices in a network.

Quick installation and improved compatibility (Plug & Play-support).

Scope of delivery: PCI-85 interface adapter card, CD with driver software, manual.

PCMCIA-85 Schneider Modbus+ adapter (416NHM21234)

Art.-Nr. ANA1575E



PCMCIA-85 Schneider Modbus+ adapter for connecting a notebook to Modbus+.

The PCMCIA-85 card connects your computer to a Modbus+ network, so that computer programs (e.g. PLC-ANALYZER pro) are able to exchange data with Schneider PLCs and other devices in a network.

USB Schneider Modbus+ adapter (TSXCUSBMBP)

Art.-Nr. ANA1555E



USB Schneider Modbus+ adapter for connecting a PC/notebook via USB to Modbus+.

The USB Schneider Modbus+ adapter connects your computer to a Modbus+ network, so that computer programs (e.g. PLC-ANALYZER pro) are able to exchange data with Schneider PLCs and other devices in a network.

GSM Quadband Modem for BLACKBOX 2

Art.-Nr. ANA9060E



GSM Quadband-Modem for SMS/E-Mail status messages, compatible with all GSM mobile communication networks 850/900/1800/1900 MHz, connection and power supply via USB-interface.

Technical data:

- Interface: USB: 2.0 high speed
- Dimensions: 62 x 59 x 20 mm (DxWxH)
- Operating temperature range: -20°C to +70°C

Scope of delivery:

- CD with software driver, manual
- USB-cable (2 m)
- Mini antenna (MMCX-connector)



AUTEM GmbH
Dithmarscher Straße 29
D-26723 Emden
Germany

Tel. +49-4921-9610-0
Fax +49-4921-9610-96
E-Mail: world@autem.de

more info www.autem.de

Accessories sioCHECK

RS232/V.24 T-interception interface for sioCHECK®

Art.-Nr. SIO1101E



RS232/V.24 T-interception interface

For monitoring both communication partners of a RS232/V.24 data link. 25-pin Sub-D interception interface, all 25 pins 1:1 loop-through. Data- and status pins are connected to the interception PC via 2 serial data lines (9-pin Sub-D connector) directly.

An AT-adaptor 9-pin Sub-D ⇒ 25-pin Sub-D is included.

TTY (20mA) T-interception interface for sioCHECK®

Art.-Nr. SIO1102E



TTY (20 mA) T-interception interface

for monitoring both communication partners of a TTY-data link. Internal conversion TTY ⇒ RS232, no external power supply necessary.

15-pin Sub-D jack/plug on the frontside (SIMATIC S5 compatible), all pins 1:1 loop-through, Pin 2+7 are DC isolated from the monitoring PC by optocoupler.

Includes two serial data cable 9 -pin Sub-D plug/jack.

RS422/485 T-interception interface for sioCHECK®

Art.-Nr. SIO1103PE



RS 422/RS485 Plus T-interception interface

for monitoring both communication partners of a RS422/RS485 data link. Internal transformation RS422/485⇒RS232, incl. external power supply.

9-pin Sub-D jack/plug on the frontside, all pins 1:1 loop-through, Pin 2+5 and Pin 3+5 are DC isolated from the monitoring PC by optocoupler.

Includes two serial data cable 9-pin Sub-D plug/jack.

2 additional COM-Ports as PC-Card for sioCHECK®

Art.-Nr. SIO1141E



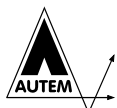
2 additional COM-Ports as PC-Card (PCMCIA)

Nowadays a lot of standard notebooks only have one or even no serial interface anymore. But for **sioCHECK®** two serial interfaces are necessary.

This PC-Card (PCMCIA) type II provides your notebook with two serial RS232 interfaces. The PC-Card is compatible with DOS / Win9x / NT / 2000 / XP.

Maximum transfer rate 115.200 Bps. Connection via 15 cm cables with 9-pin Sub-D connectors.

SIMATIC, S5, S7, C7, S7-200, S7-300 and S7-400 are trademarks of Siemens AG.



AUTEM GmbH
Dithmarscher Straße 29
D-26723 Emden
Germany

Tel. +49-4921-9610-0
Fax +49-4921-9610-96
E-mail: world@autem.de

more info www.autem.de